

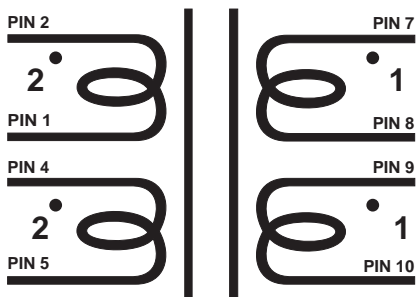
*Edcor*

*Class X*

# XS1100

Max. Input: 7.5Vrms

Primary to Secondary turns ratio: 2:1



[www.edcorusa.com](http://www.edcorusa.com)

EDCOR Electronics Corporation  
7130 National Parks Highway  
Carlsbad, NM 88220  
U.S.A.  
(575) 887-6790

✓RoHS  
✓REACH

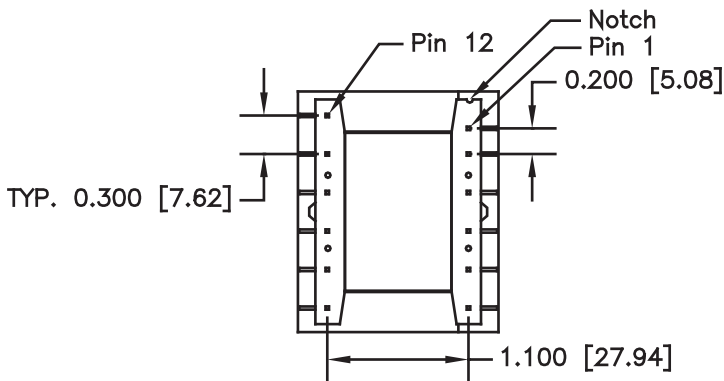
*Edcor*

*Class X*

# XS1100

12 Pin PCB Mounted Transformer

Pin 1 is offset for keying.  
Pad should be at least 150 mil. dia.  
Holes should be 55 mil. dia.  
after 2 oz. copper plated though.



[www.edcorusa.com](http://www.edcorusa.com)

EDCOR Electronics Corporation  
7130 National Parks Highway  
Carlsbad, NM 88220  
U.S.A.  
(575) 887-6790