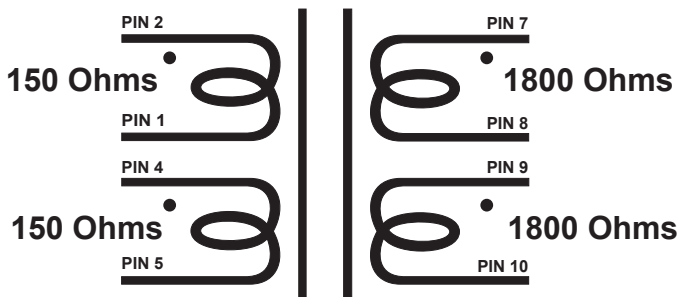


*Edcor*

*Class X*

# **XS150-1800**

**Primary: Dual 150 Ohms**  
**Secondary: Dual 1800 Ohms**



**[www.edcorusa.com](http://www.edcorusa.com)**

EDCOR Electronics Corporation  
7130 National Parks Highway  
Carlsbad, NM 88220  
U.S.A.  
(575) 887-6790

✓RoHS  
✓REACH

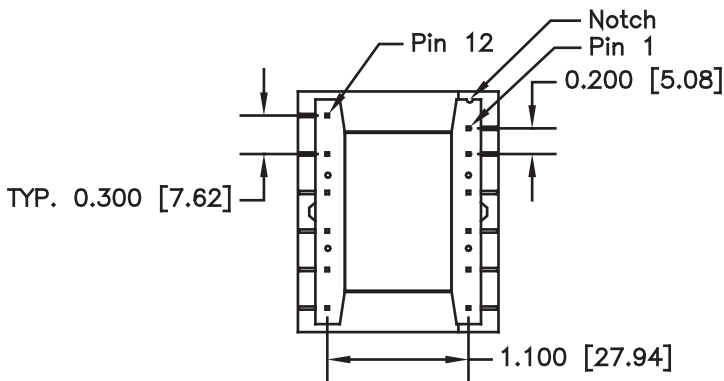
# Edcor

# Class X

## XS150-1800

12 Pin PCB Mounted Transformer

Pin 1 is offset for keying.  
Pad should be at least 150 mil. dia.  
Holes should be 55 mil. dia.  
after 2 oz. copper plated though.



[www.edcorusa.com](http://www.edcorusa.com)

EDCOR Electronics Corporation  
7130 National Parks Highway  
Carlsbad, NM 88220  
U.S.A.  
(575) 887-6790